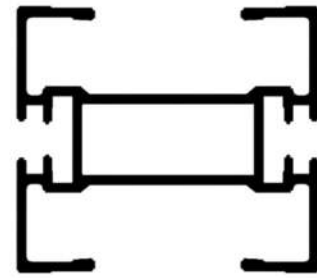
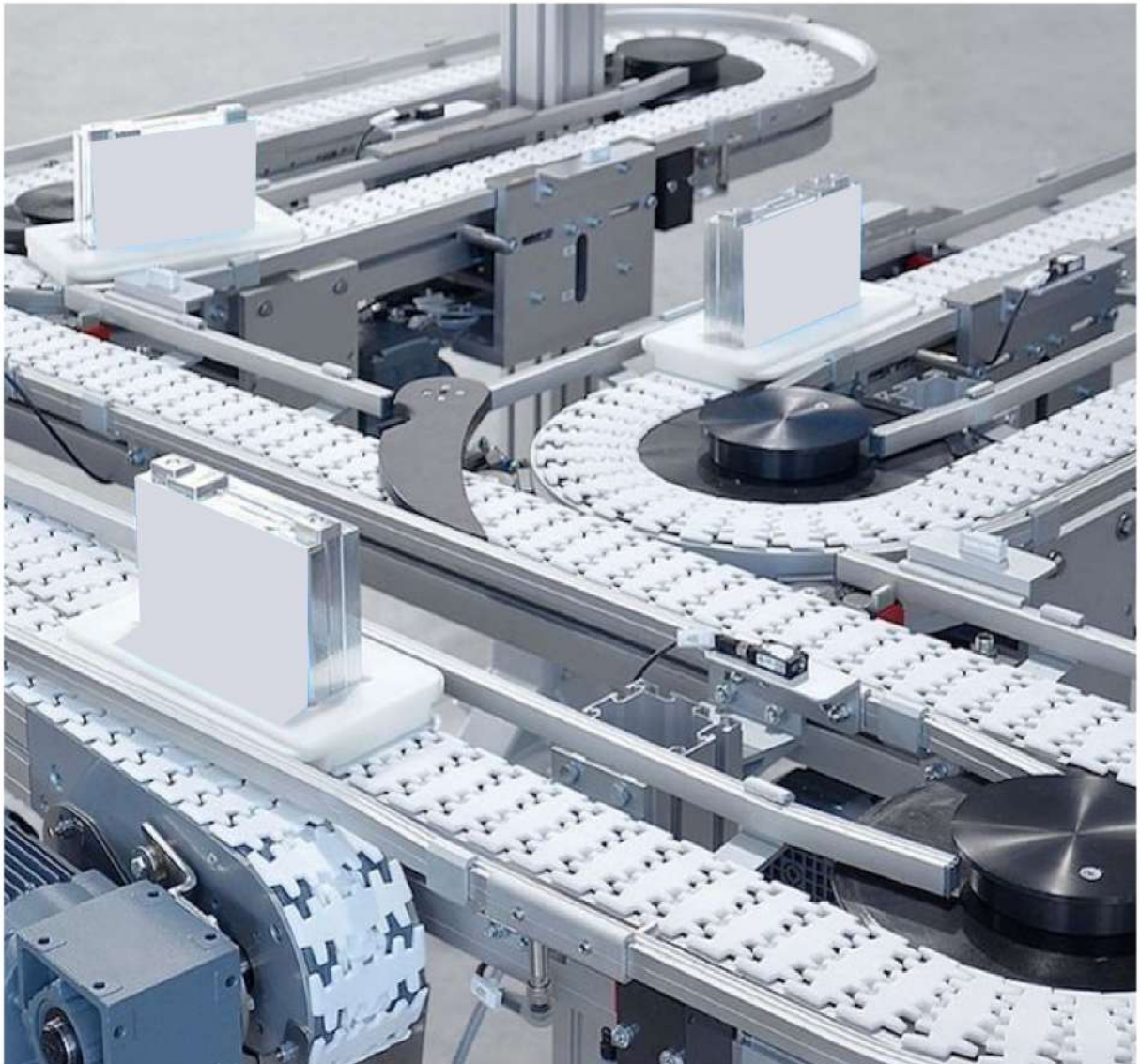




Flexible Conveyor System



Automation



Version: 10.24

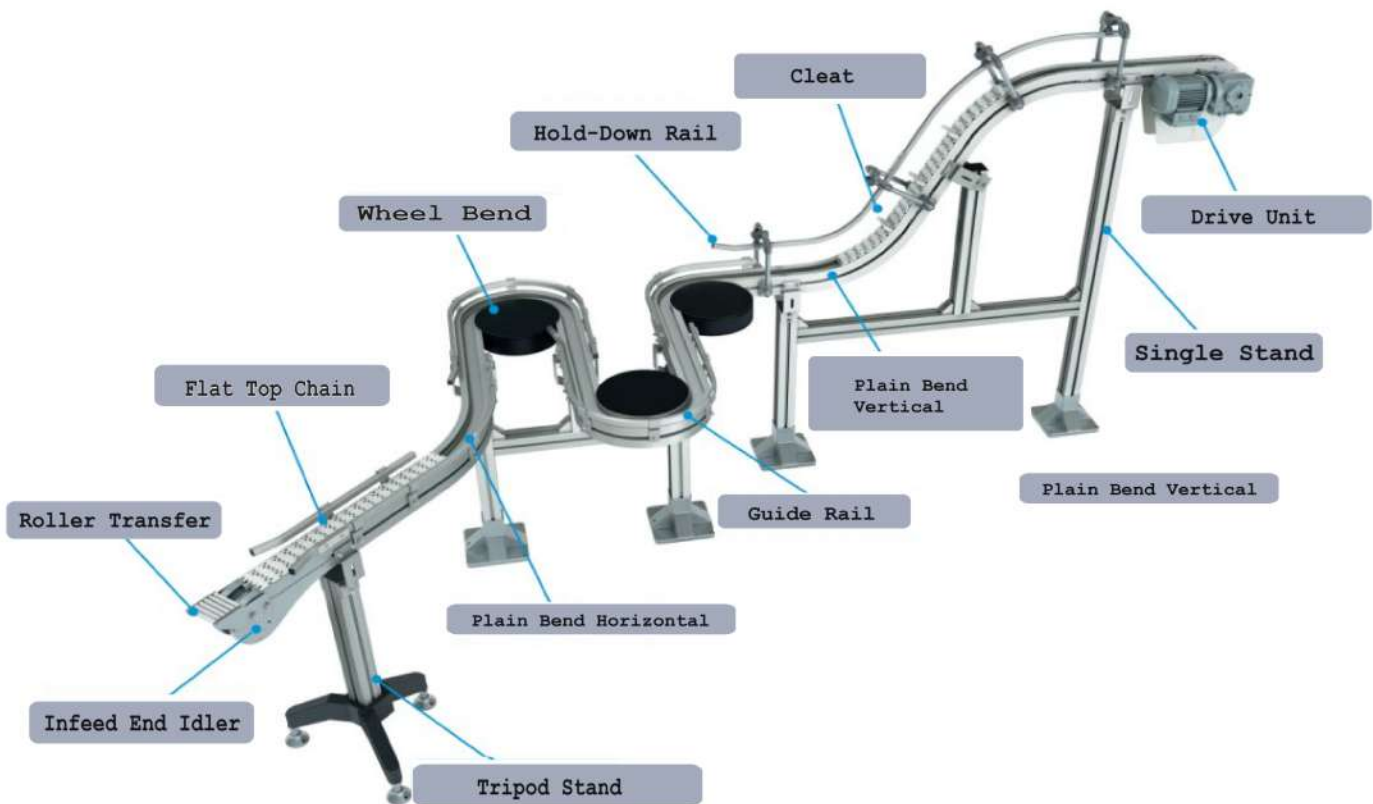


Order code: 888.....



Benefits

Economical solution for complex layouts
Simple and Fast Configuration and
commissioning
Suitable for all industries and
compatible with existing systems

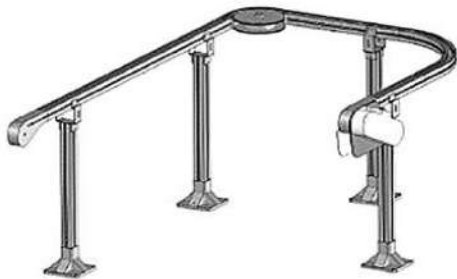


3 AUTOMATION



Configuration Examples For DEXTEROUS Conveyors

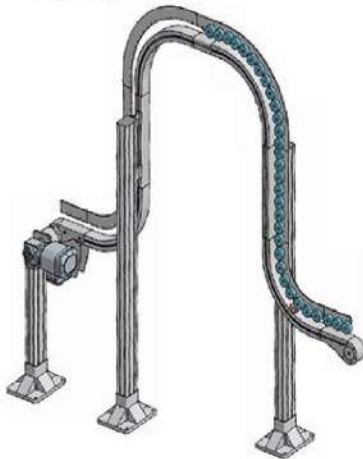
Horizontal



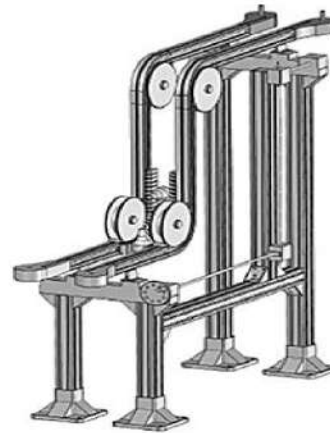
Incline



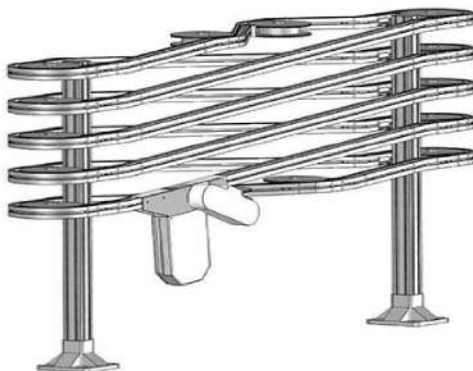
Vertical



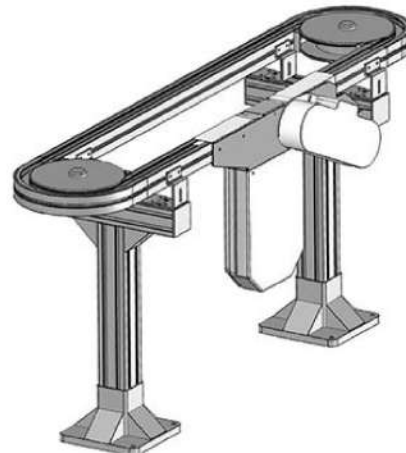
Wedge



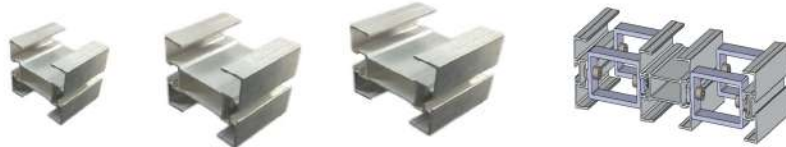
Alpine



Recirculating



Aluminium Conveyor System



1

Chains Link



2

Drive Units
Idler Units



3

Slide Rails



4

Bends



5

Guide Supportings



6

Conveyor Supports,
Fence Mount Base &
Beam Connecting
Part



7

5 AUTOMATION



Overview of Systems

Section	001	002	003	004
Conveyor				
Frame width(mm)	65	85	105	300
Frame height including Chain (mm)	73	85	85	95
Maximum total load	330	440		
Maximum Conveyor length(m)	40	30		
Maximum Conveyor speed (fpm)	165			
Chain				
Chain width(mm)	63	83	103	295
Chain pitch(mm)	25.4	33.5		
Chain tensile force(N)	500	1,250		
Product				
Product width(mm)	15-140	20-200	70-400	
Maximum product weight(kgs) Horizontal conveying	9.9	14.9	14.9	
Maximum product weight(kgs) Incline conveying	1.9	9.9	9.9	
Cross-sectional View of Conveyor				



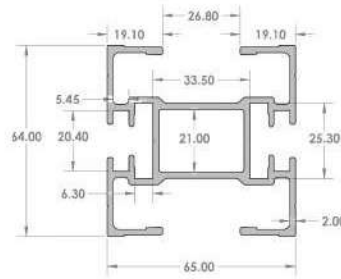
CONVEYOR SECTION

Conveyor Section 65

888 100 001

1

Quantity/Box 12M
Weight/M 2.11kgs
Weight/Box 27 kgs



Frame Width: 65 mm
Chain Width: 63 mm
Product Width: 15-140 mm
Length: up to 40 m
Curves: minimum radius of 150 mm
Load: Up to 140 Kgs.

Speed: Up to 165 fpm
Constant or Variable
speed options

Voltage: Indian Standard

Technical Specifications:

Anodized aluminum frame
Features a double t-slot,
Frame height is 73 mm
Chain pitch is 25.4 mm
Maximum product weight
Horizontal conveying: 9kgs.
Vertical conveying: 1.5 kgs.

Features a direct drive for
a economical and space saving design

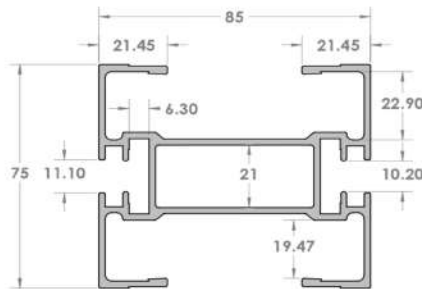
Minimum curve radius is 150 mm



CONVEYOR SECTION

888 100 002

Conveyor Section 85



Quantity/Box	12M
Weight/M	2.54kgs
Weight/Box	33kgs

1

Frame Width: 85 mm
 Chain Width: 83 mm
 Product
 Width: 20-200 mm
 Pallet
 Width: 150 mm
 Length: up to 30 m
 Curves: minimum
 radius of 160 mm
 Load: Up to 199 Kgs
 Speed: Up to 165 fpm
 (feet per minute
 Constant or Variable
 speed options
 Voltage: standard

Technical Specifications:

Anodized aluminum frame
 Features a double t-slot,
 Frame width is 85 mm
 Chain width is 83 mm
 Frame height is 85 mm
 Chain pitch is 33.5 mm
 Maximum product weight
 Horizontal
 conveying: 15 Kgs.
 Vertical
 conveying: 10 Kgs
 Features a
 direct drive
 for a economical
 and space saving
 design Minimum curve
 radius is 160 mm

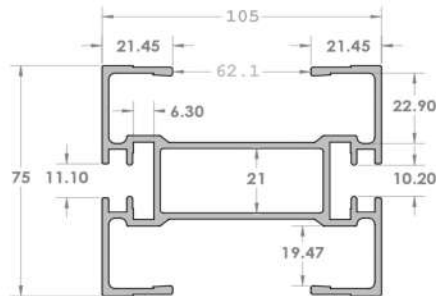


CONVEYOR SECTION

Conveyor Section 105

888 100 003

Quantity/Box :6M
Weight/M :2.75Kgs
Weight/Box :16.524Kgs



Frame Width: 105mm

Chain Width: 103mm

Product

Width: 25-300 mm

Length: up to up to 30 m

Curves: minimum
radius of 170 mm

Load: Up to 440 lbs.

Speed: Up to 165 fpm

(feet per minute)

Constant or Variable
speed options

Voltage: standard

Technical Specifications:

Anodized aluminum frame
Features a double t-slot,

Frame width is 105 mm

Chain width is 103 mm

Chain pitch is 35.5 mm

Maximum product weight

Horizontal

conveying: 29Kgs

Vertical

conveying: 19Kgs

Features a

direct drive

for a economical

and space saving

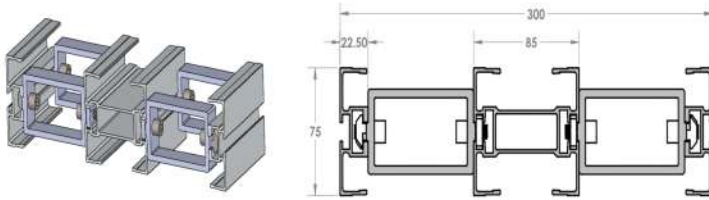
design Minimum curve

radius is 170 mm

CONVEYOR SECTION

888 100 004

Conveyor Section 300



Quantity/Box	6M
Weight/M	4.74kgs
Weight/Box	30kgs

1

Frame Width: 300 mm
 Chain Width: 295 mm
 Product Width: 25-300 mm
 Length: up to 30 m
 Curves: minimum radius of 160 mm
 Load: Up to 200 Kgs.
 Speed: Up to 165 fpm;
 Constant or Variable speed options
 Voltage: Indian Standard

Technical Specifications:

Anodized aluminum frame
 Features a double t-slot,
 Frame width is 300 mm
 Chain width is 295 mm
 Frame height is 95 mm
 Chain pitch is 33.5 mm
 Maximum product weight:
 Horizontal conveying: 14 kgs.
 Vertical conveying: 9 kgs
 Features a directdrive
 for a economical and space
 saving design
 Minimum curve
 radius is 700 mm

Conveyor Chain Types & Options

Conveyor chains are made from POM and are available in a wide variety of styles for virtually all applications. These styles include with an adhesive surface (for inches), or with steel covering (for sharp edge parts) or flocked (for transporting very delicate items). In addition, a large variety of different cleats are available - standard vertical flights, rollers in a variety of sizes, or flexible cleats for wedge conveyor designs



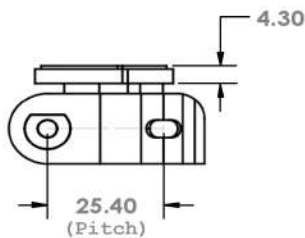
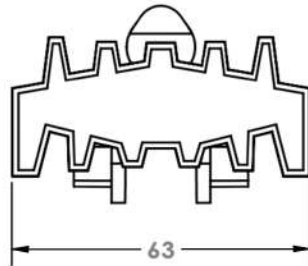
- 1 Cleated Chain
- 2 Roller chain
- 3 Roller top chain
- 4 Side gripping
- 5 Chain for attachments
- 6 Flocked chain
- 7 Steel top chain
- 8 Chain with adhesive surface
- 9 Plain chain



CHAIN LINKS

888 101 001

Chain 65mm Conveyor



Quantity/box: 5M

Weight/M: 0.75kgs

Weight/box: 3.75kgs

Chain Width: 63mm

Chain pitch is 25.4mm

Material:

Chain : Delrin White

Chain Pivot Lock: Delrin White

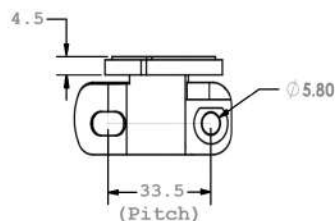
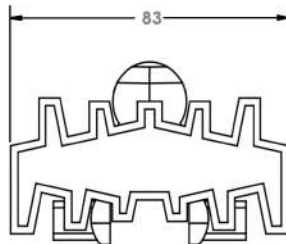
Pin : Steel, Zinc plated

Suitable For 65mm Conveyor

2

888 101 002

Chain 85mm Conveyor



Quantity/box: 5M

Weight/M: 1.25kgs

Weight/box: 6.25kgs

Chain Width: 83 mm

Chain pitch is 33.5 mm

Material:

Chain : Delrin White

Chain Pivot Lock: Delrin White

Pin : Steel, Zinc plated

Suitable For 85mm Conveyor



CHAIN LINKS

Chain 105mm Conveyor

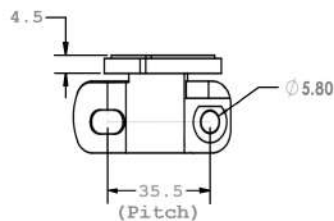
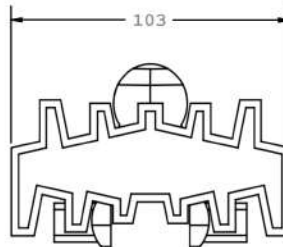
888 101 003

Quantity/Box: 5M
Weight/M : 1.05Kgs
Weight/box : 5.25Kgs

Chain Width: 103mm
Chain pitch: 33.5 mm

Material:

Chain : Delrin White
Chain Pivot Lock: Delrin White
Pin : Steel, Zinc plated
Suitable For 105mm Conveyor



2

Chain 300mm Conveyor

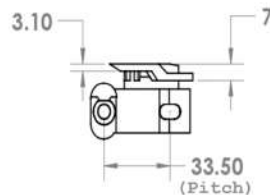
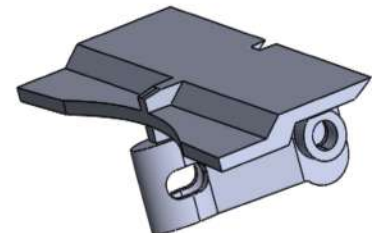
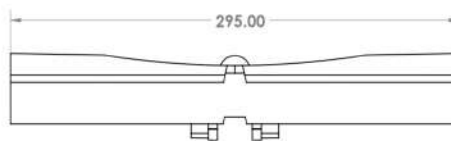
888 101 004

Quantity/Box: 5M
Weight/M : 2.5Kgs
Weight/box : 12.5kgs

Chain Width: 295 mm
Chain pitch: 33.5 mm

Material:

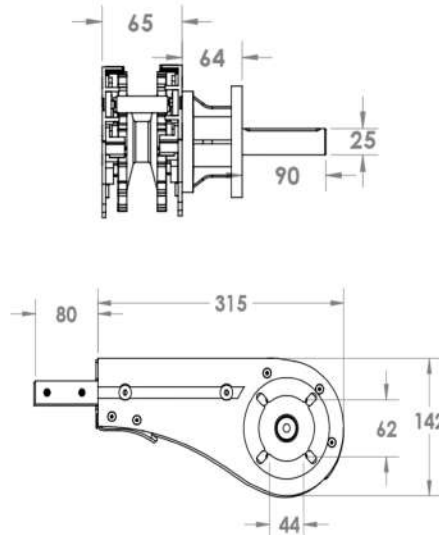
Chain : Delrin White
Chain Pivot Lock: Delrin White
Pin : Steel, Zinc plated
Suitable For 300mm Conveyor



DRIVE UNITS

888 102 001

Drive unit 65



Drive Unit

Quantity/Box: 1

Weight/Pc : 3.7Kgs

Weight/Box: 3.7Kgs

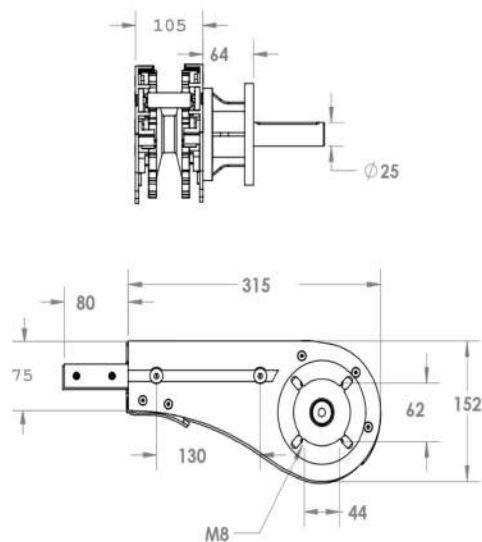
Suitable for
65mm conveyors

note: Connecting
strip can be
directly connected
to conveyor section
with M8x10 Grub
screw

3

888 102 002

Drive unit 85



Drive Unit

Quantity/Box: 1

Weight/Pc : 4.6kgs

Weight/Box: 4.6kgs

Suitable for
85mm conveyors

note: Connecting
strip can be
directly connected
to conveyor section
with M8x10 Grub
screw



DRIVE UNITS

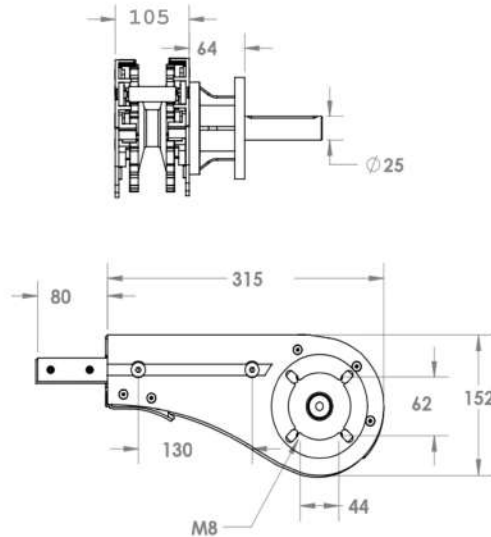
Drive Unit 105

888 102 003

Quantity/Box: 1
Weight/Pc : 4.8Kgs
Weight/Box: 4.8Kgs

Suitable for
105mm conveyors

note: Connecting
strip can be
directly connected
to conveyor section
with M8x10 Grub
screw



3

Drive unit 300

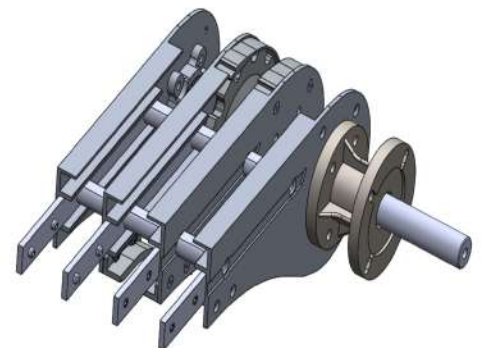
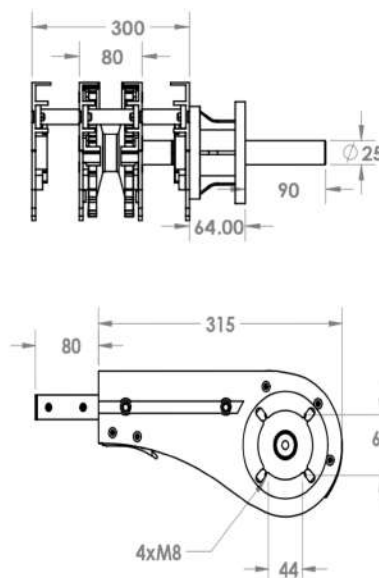
888 102 004

Drive Unit

Quantity/Box: 1
Weight/Pc : 7.2kgs
Weight/Box: 7.2kgs

Suitable for
300mm conveyors

note: Connecting
strip can be
directly connected
to conveyor section
with M8x10 Grub
screw

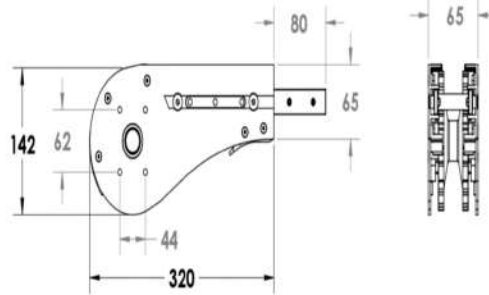


IDLER UNITS

888 103 001

Idler Unit 65

4



Idler Unit

Quantity/Box: 1

Weight/Pc : 2.13kgs

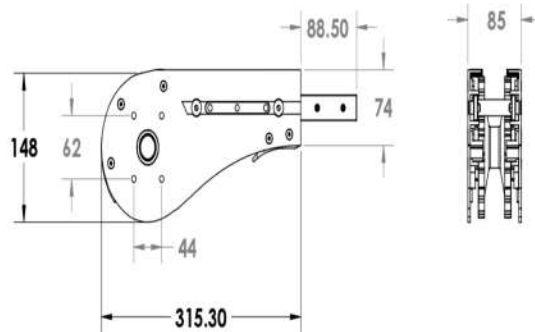
Weight/Box: 2.13kgs

Suitable for
65mm conveyors

note: Connecting
strip can be
directly connected
to conveyor section
with M8x10 Grub
screw

888 103 002

Idler Unit 85



Idler Unit

Quantity/Box: 1

Weight/Pc : 2.5kgs

Weight/Box: 2.5kgs

Suitable for
85mm conveyors

note: Connecting
strip can be
directly connected
to conveyor section
with M8x10 Grub
screw



IDLER UNITS

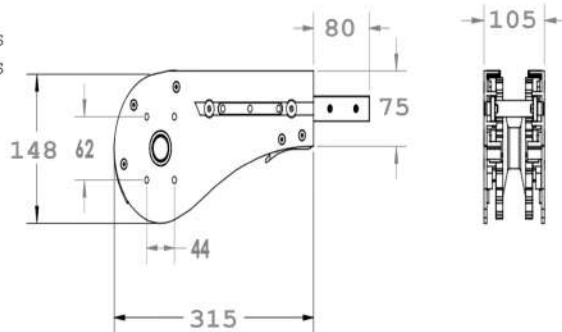
Idler Unit 105

888 103 003

Quantity/Box: 1
Weight/Pc : 2.64Kgs
Weight/Box: 2.64Kgs

Suitable for
105mm conveyors

note: Connecting
strip can be
directly connected
to conveyor section
with M8x10 Grub
screw



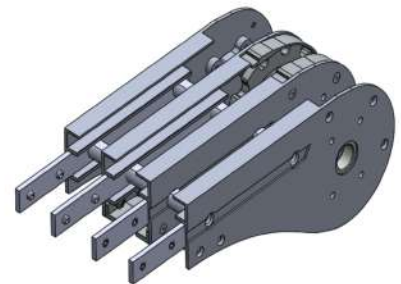
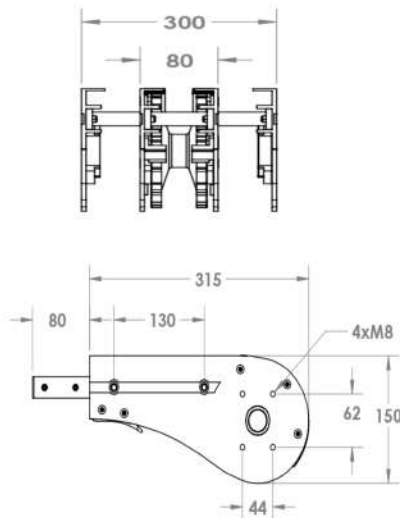
Idler Unit 300

888 103 004

Quantity/Box: 1
Weight/Pc : 6kgs
Weight/Box: 6kgs

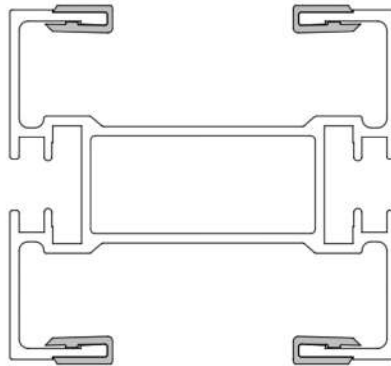
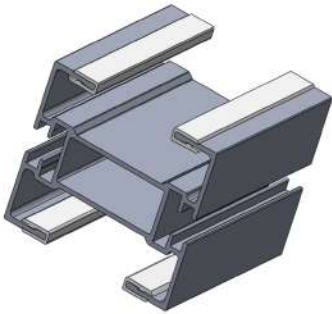
Suitable for
300mm conveyors

note: Connecting
strip can be
directly connected
to conveyor section
with M8x10 Grub
screw



SLIDE RAILS

General



Material: PE

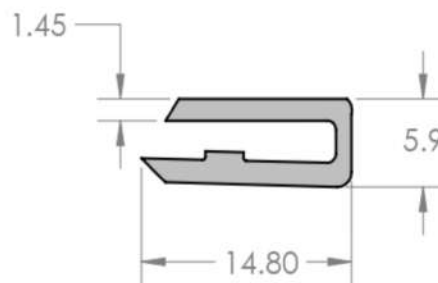
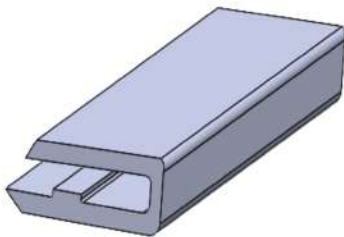
Advantages:

To matched with conveyor section , Prevent falling off.

Plastic screws to fix sliding

888 104 001

Slide Rail 85mm,180mm,300mm Section



Quantity/box: 25M

Weight/M : 0.05kgs

Weight/box: 1.25kgs

Material: UHMW-PE



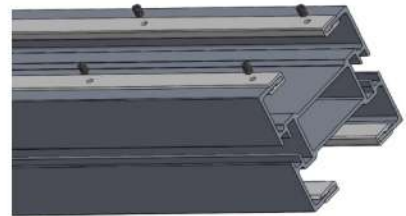
PLASTIC SCREWS

General

Material: PA6

Advantages:

Use to fix the plastic slide rail on the conveyor section



Plastic screw

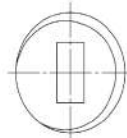
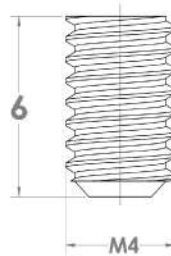
888 104 002

4

Quantity/box: 20

Weight/box: 0.00122 Kgs

Material: PA6

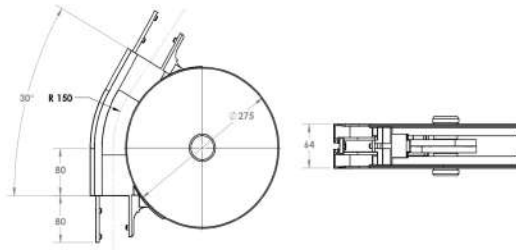


WHEEL BENDS

888 105 ...

Wheel Bend 65mm Section

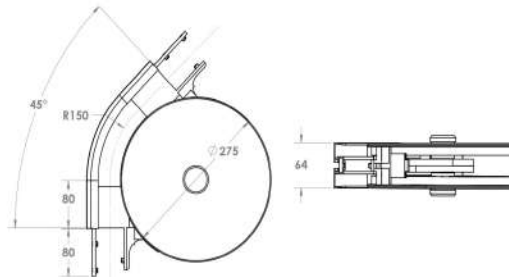
Wheel Bend 30 Deg: 001



Quantity/Box: 1
 Weight/Pc : 3.15kgs
 Weight/Box : 3.15kgs

Suitable For: 65mm
 Conveyor

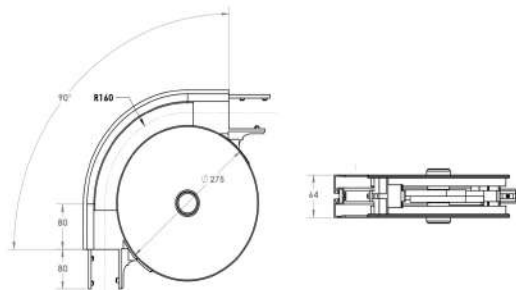
Wheel Bend 45 Deg: 002



Quantity/Box: 1
 Weight/Pc : 3.20kgs
 Weight/Box : 3.20kgs

Suitable For: 65mm
 Conveyor

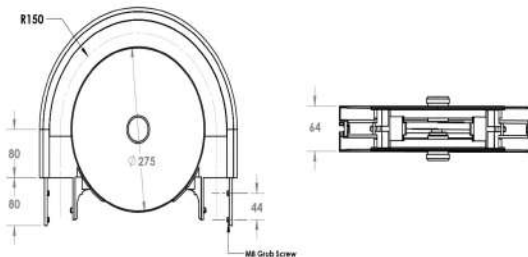
Wheel Bend 90 Deg: 003



Quantity/Box: 1
 Weight/Pc : 3.30kgs
 Weight/Box : 3.30kgs

Suitable For: 65mm
 Conveyor

Wheel Bend 180 Deg: 004



Quantity/Box: 1
 Weight/Pc : 3.40kgs
 Weight/Box : 3.40kgs

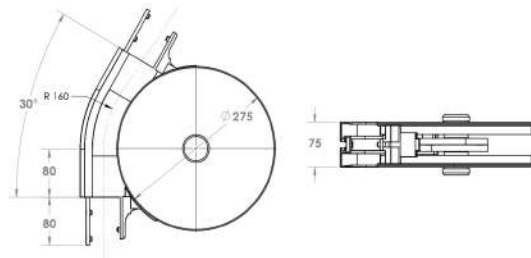
Suitable For: 65mm
 Conveyor

WHEEL BENDS

Wheel Bend 85mm Section

888 105 ...

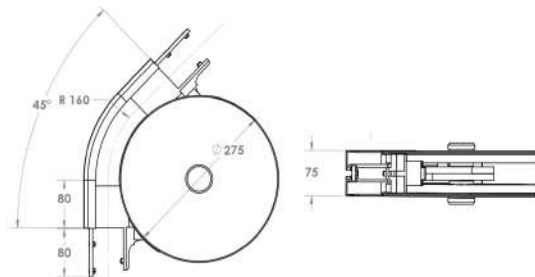
Quantity/Box: 1
 Weight/Pc : 3kgs
 Weight/Box : 3kgs
 Suitable For :85mm
 Conveyor



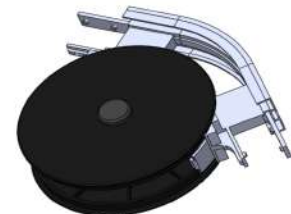
Wheel Bend 30 Deg:005



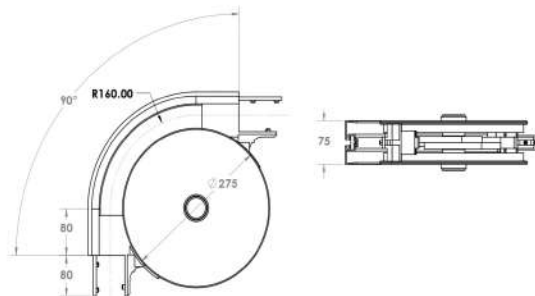
Quantity/Box: 1
 Weight/Pc : 3.05kgs
 Weight/Box : 3.05kgs
 Suitable For :85mm
 Conveyor



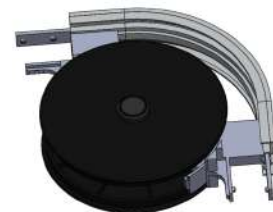
Wheel Bend 45 Deg:006



Quantity/Box: 1
 Weight/Pc : 3.18kgs
 Weight/Box : 3.18kgs
 Suitable For :85mm
 Conveyor

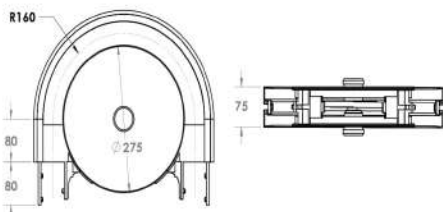


Wheel Bend 90 Deg:007



5

Quantity/Box: 1
 Weight/Pc : 3.30kgs
 Weight/Box : 3.30kgs
 Suitable For :85mm
 Conveyor



Wheel Bend 180 Deg:008

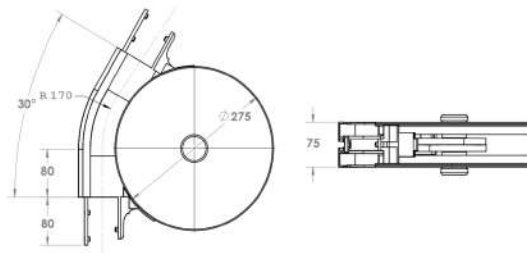


WHEEL BENDS

888 105 ...

Wheel Bend 105mm Section

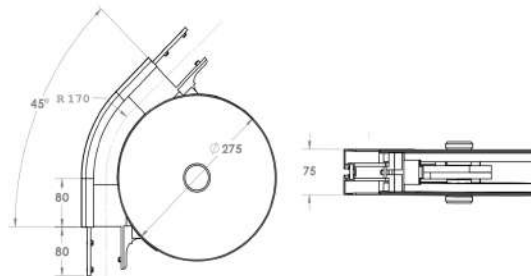
Wheel Bend 30 Deg: 010



Quantity/Box: 1
Weight/Pc : 3.10Kgs
Weight/Box : 3.10Kgs

Suitable For :105mm
Conveyor

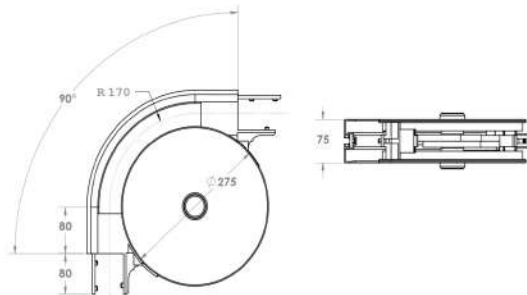
Wheel Bend 45 Deg: 011



Quantity/Box: 1
Weight/Pc : 3.25Kgs
Weight/Box : 3.25Kgs

Suitable For :105mm
Conveyor

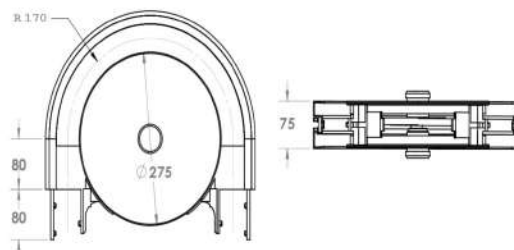
Wheel Bend 90 Deg: 012



Quantity/Box: 1
Weight/Pc : 3.46Kgs
Weight/Box : 3.46Kgs

Suitable For :105mm
Conveyor

Wheel Bend 180 Deg: 013



Quantity/Box: 1
Weight/Pc : 3.84Kgs
Weight/Box : 3.84Kgs

Suitable For :105mm
Conveyor

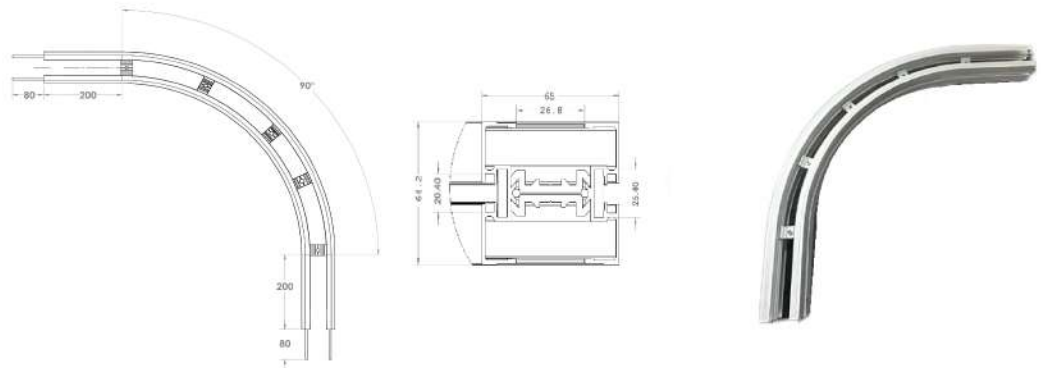


HORIZONTAL PLAIN BENDS

Horizontal Plain Bend 65mm Section

888 105 017

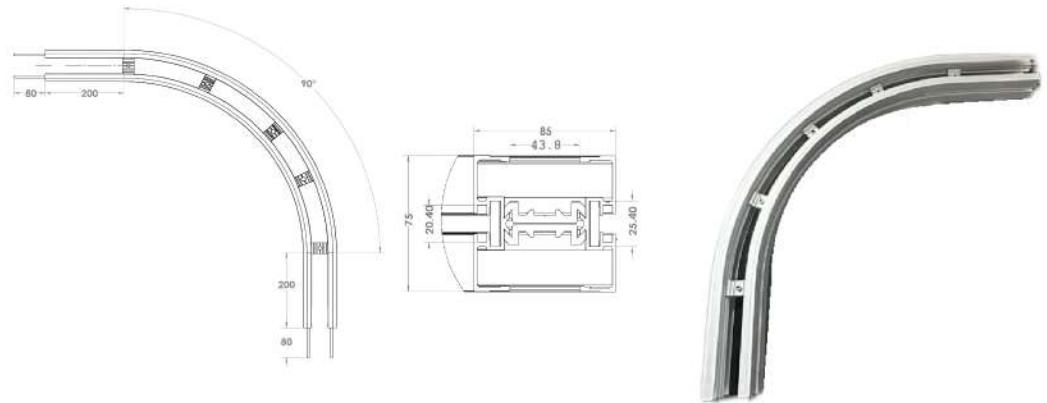
Quantity:1 Nos
Weight/Pc:3.25 Kgs
Weight/box:3.25 Kgs



Horizontal Plain Bend 85mm Conveyor

888 105 018

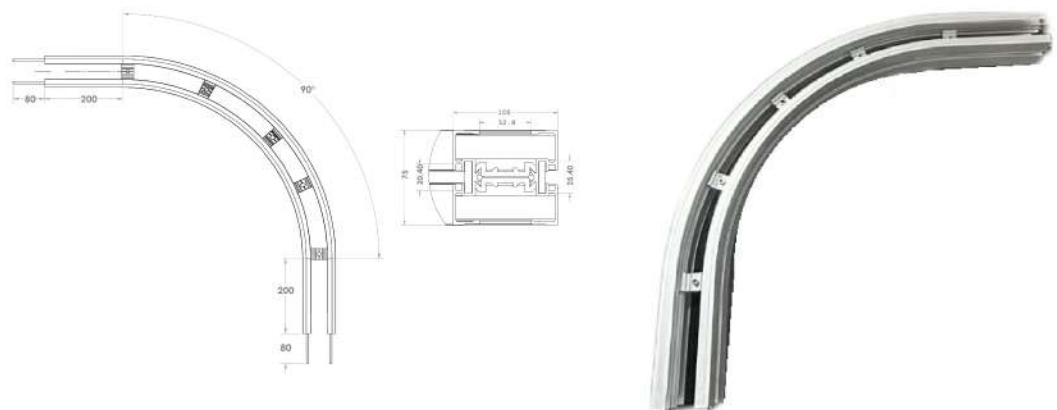
Quantity:1 Nos
Weight/Pc:3.39 Kgs
Weight/box:3.39 Kgs



Horizontal Plain Bend 105mm Conveyor

888 105 019

Quantity:1 Nos
Weight/Pc:3.68 Kgs
Weight/box:3.68 Kgs

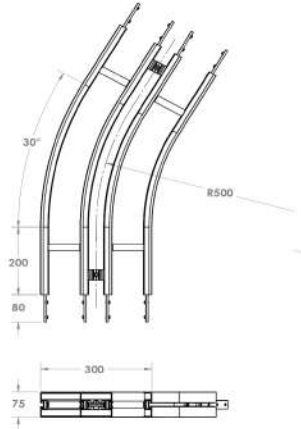


HORIZONTAL PLAIN BENDS

888 105 ...

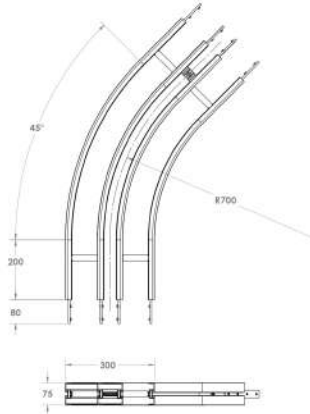
Horizontal Plain Bends 300mm Section

Horizontal Plain Bend 30 Deg: 014



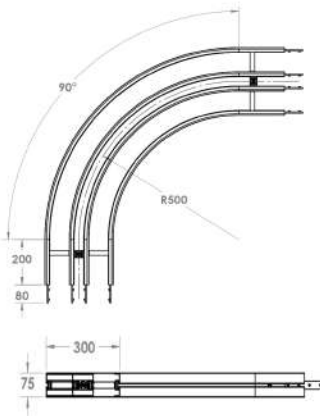
Quantity/Box: 1
Weight/Pc : 6.44Kgs
Weight/Box : 6.44Kgs
Suitable For:300mm
Conveyor

Horizontal Plain Bend 45 Deg :015



Quantity/Box: 1
Weight/Pc : 7.24Kgs
Weight/Box : 7.24Kgs
Suitable For:300mm
Conveyor

Horizontal Plain Bend 90 Deg:016

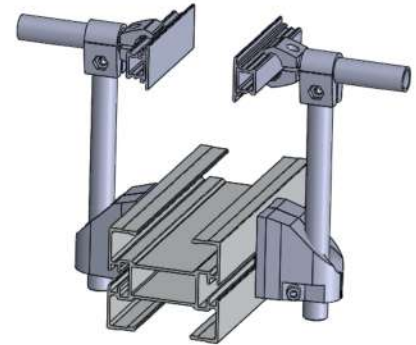
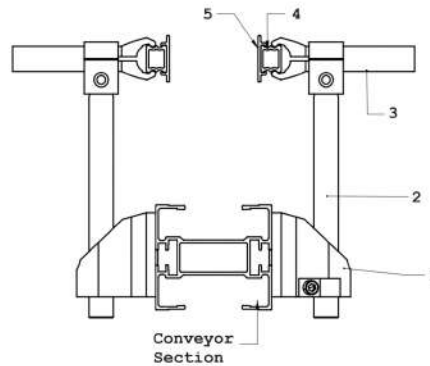


Quantity/Box: 1
Weight/Pc : 9.64Kgs
Weight/Box : 9.64Kgs
Suitable For:300mm
Conveyor

GUIDE RAILS

General

To Guide the Products in its path



Guide Rail Bracket

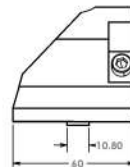
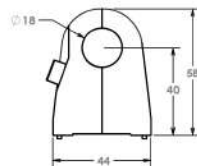
888 106 001

Quantity: 10
 Weight/Pc: 0.08kgs
 Weight/box: 0.8kgs

Suitable for Guide rail support parts

Material:

PA 6, Glass reinforced



Guide Rail Clamp Support

888 106 002

Quantity: 10
 Weight/Pc: 0.03kgs
 Weight/box: 0.3kgs

Suitable for Guide rail support parts

Material:

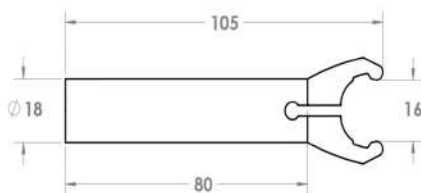
PA 6, Glass reinforced



GUIDE RAILS

888 106 003

Guide Rail Clmap



Quantity: 10
 Weight/Pc: 0.02kgs
 Weight/box: 0.2kgs

Suitable for Guide rail support parts

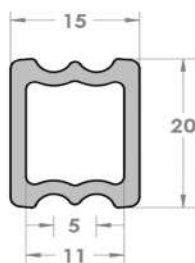
Easy to assembly and mounting

Material:

PA 6, Glass reinforced

888 106 004

Guide Rail- Aluminium



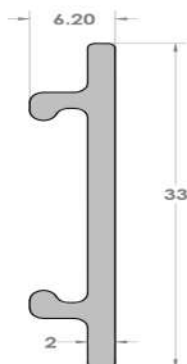
Quantity: 30M
 Weight/Pc: 0.4Kgs
 Weight/box: 12kgs

Material: AL 6063 T6

To guide the product from both sides

888 106 005

Guide Rail Cover



Quantity: 30M
 Weight/Pc: 0.35kgs
 Weight/box: 10.5kgs

Material: UHMW-PE

To guide the product from both sides

Advantages:

Friction is very low, because of it we can avoid damages in products

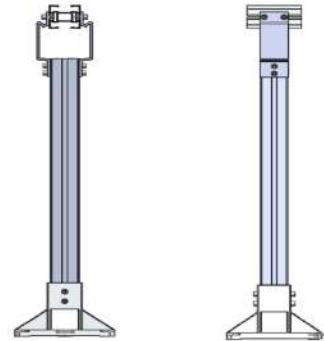
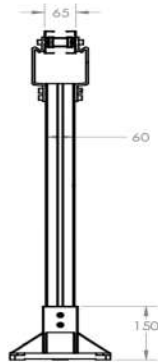
CONVEYOR SUPPORT

Conveyor Support 65mm

888 107 ...

To Support the Conveyor section Assembly

1. Support Bracket
2. M8x16 Allen Head Screw
3. Profile 60x60
4. Fence Mount Base 60x60



Profile 60x60 4-Slot

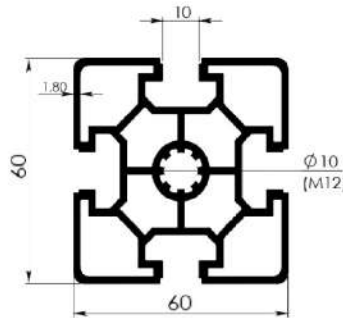
999 100 028

Quantity/Box	24M
Weight/M	2.56kgs
Weight/Box	63kgs
Moment of Inertia	(Ix) 38,7 cm ⁴ (Iy) 38,7 cm ⁴
Profile Surface	1010mm ²

Application:

Rigid machine frame
Work bench
Robot cell

Note: Refer Aluminium Profile system catalogue for details : Page no 15



Profile 60x60 4-Slot Heavy

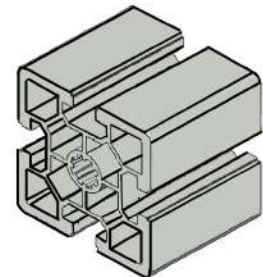
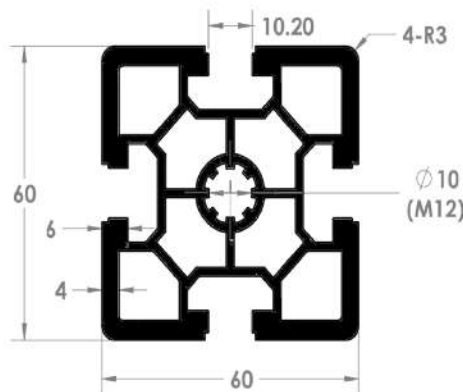
999 100 037

Quantity/Box	24M
Weight/M	3.5 kgs
Weight/Box	84 kgs
Moment of Inertia	(Ix) 50.3 cm ⁴ (Iy) 50.3 cm ⁴
Profile Surface	1296.38 mm ²

Application:

Rigid machine frame
Work bench
Robot cell

Note: Refer Aluminium Profile system catalogue for details : Page no 15





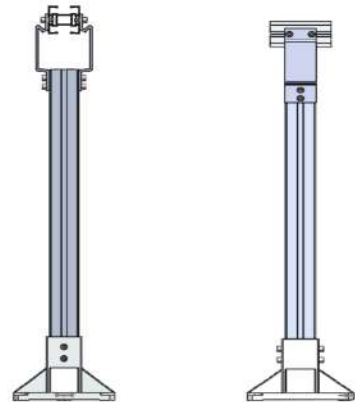
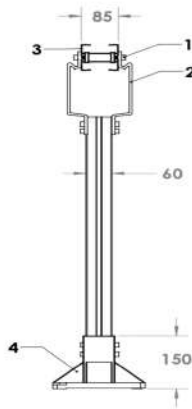
CONVEYOR SUPPORT

General

Beam support Bracket 85mm section

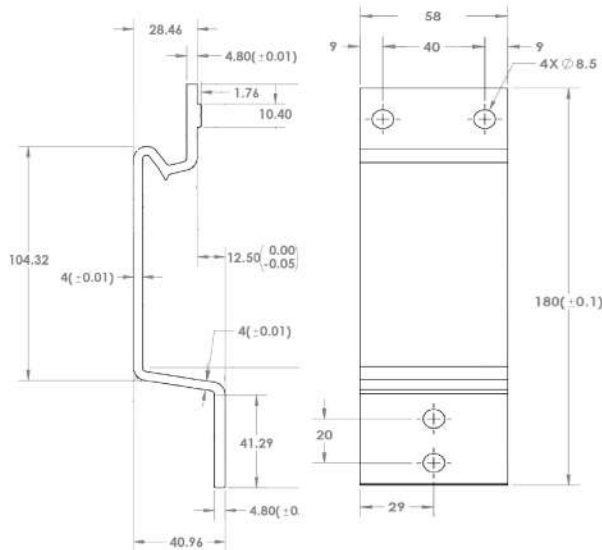
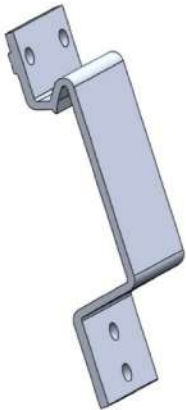
To hold the Assembly of conveyors

1. M8X16 Screw
2. Beam Connecting Part
3. 85mm Section
4. Fence Mount Base 60x60
5. Profile 60x60



888 107 002

Beam Connecting Part 85 mm section



Quantity/Box: 10

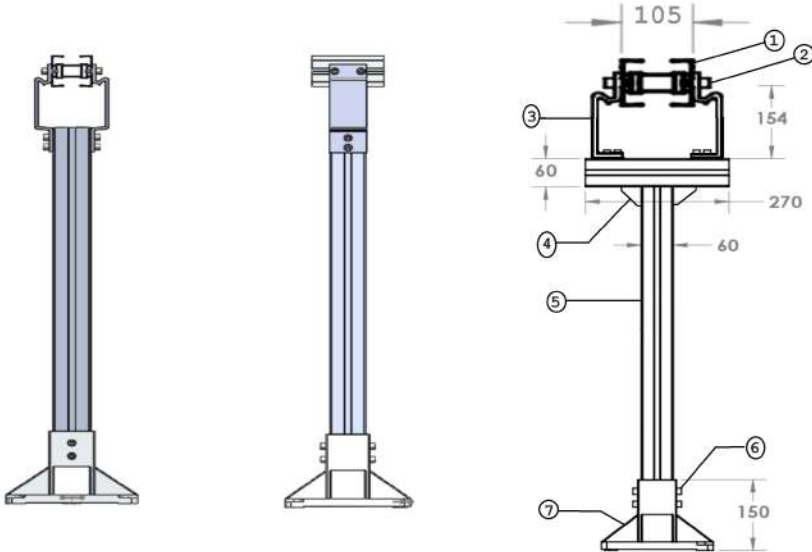
Weight/Pc : 0.16Kgs

Weight/Box : 1.6Kgs

Material: AL 6063 T6

CONVEYOR SUPPORT

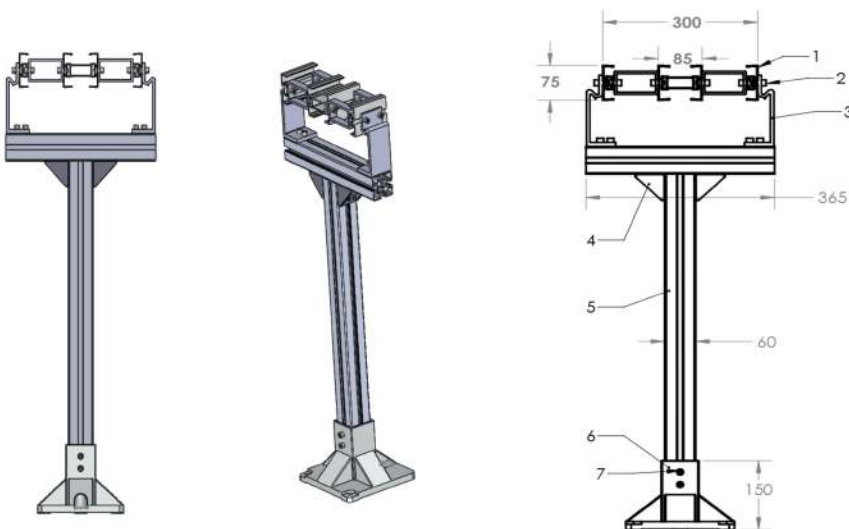
Conveyor Support 105mm



TO support the conveyor assembly

1. 105mm Conveyor Section
2. M8x12 Allen Head Screw
3. Conveyor Support Bracket
4. 60x60 Bracket
5. 60X60 Profile
6. M8x16 Allen Head Screw
7. Fence mount base 60x60

Conveyor Support 300mm



TO support the conveyor assembly

1. 300mm Conveyor Section
2. M8x12 Allen Head Screw
3. Conveyor Support Bracket
4. 60x60 Bracket
5. 60X60 Profile
6. M8x16 Allen Head Screw
7. Fence mount base 60x60

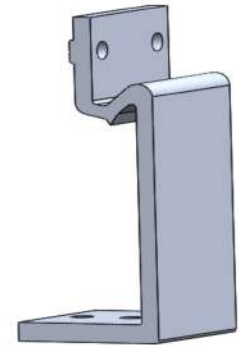
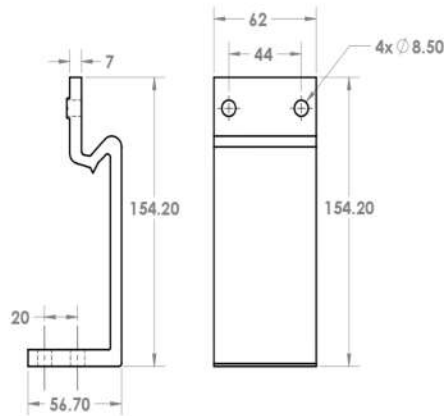


CONVEYOR SUPPORT

Beam Connecting Part 105 & 300

888 107 003

Quantity/box: 10
Weight/pc : 0.286Kgs
Weight/box : 2.86Kgs

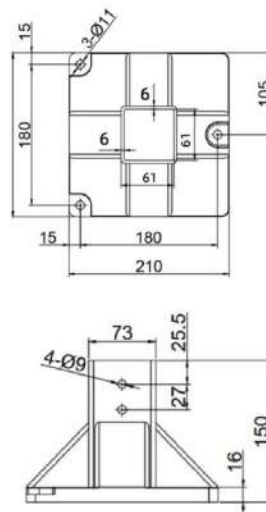


Base Mount 60x60

999 124 003

Quantity/Box: 1
Weight/Pc: 1.447kgs
Weight/Box: 1.447kgs

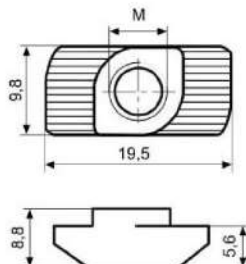
Note: Refer Aluminium Profile system catalogue for details
: Page no 51



FIXING ,INSTALATION MATERIAL

999 150 009

T Nut 10



Quantity/box 100

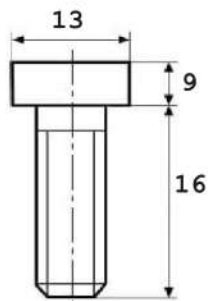
Slot 10, M8

Weight/pc 6.62gms

Weight/box 0.662kgs

999 154 003

Screw



M8x16

Quantity/box 500

Weight/pc 5,5g

Weight/box 2,75kgs



NOTES



NOTES



888...	S./P	888...	S./P	888...	S./P	888...
100 001	6	105 008	20			
100 002	7	105 009	21			
100 003	8	105 010	21			
100 004	9	105 011	21			
101 001	11	105 012	21			
101 002	11	105 013	21			
101 003	12	105 014	23			
101 004	12	105 015	23			
102 001	13	105 016	23			
102 002	13	105 017	22			
102 003	14	105 018	22			
102 004	14	105 019	22			
103 001	15	106 001	24			
103 002	15	106 002	24			
103 003	16	106 003	25			
103 004	16	106 004	25			
104 001	17	106 005	25			
104 002	18	107 002	27			
105 001	19	107 003	29			
105 002	19					
105 003	19					
105 004	19					
105 005	20					
105 006	20					
105 007	20					



Flexible Conveyor System



DEXTEROUS (AUTOMATION APT)

#51B, Bommasandra Industrial Area
Phase 1, Hosur Rd, Opp. Continental,
Bangalore, Karnataka, INDIA- 560099.

Reach us at:

Marketing Head : +91 87222 72222
Accounts HOD : +91 76195 28179
Office : +91 96861 76179
Managing Director : +91 96635 28179
Email : info@dexterousaluminiumprofile.com
www.dexterousaluminiumprofile.com